

## **The Nexus PC Lifecycle Management (PCLM)**

*Software installation and Desktop management anywhere in the world*

PC down-time in most organizations far exceeds loss of revenue due to Network and/or Server outages. PCLM is the ultimate desktop management system. From a central location in our world-class Data Center we can manage all the IT assets in your corporate network anywhere in the world, from software applications to disaster recovery at the push of a button.

### **Proven reduction of IT fix costs up to 85%!**

PCLM manages your corporate PCs, servers and software packages efficiently from one central location at our world class Data Center. Our PCLM service represents leading edge technology for automated application and data distribution and can be fully integrated with existing IT infrastructures.

Comprehensive automation of processes related to user support and PC operations help your company achieve measurable cost savings. PCLM uses leading edge technology for automated data distribution in networks or via the Internet, and allows for the easy distribution, installation and modification of all components of a PC work environment – operating system, applications as well as personal settings and files. The centralized inventory of all workstations, combined with consolidated report and alarm management tools, provides the basis for helping your organization ensure full transparency of your IT infrastructure.

### **Main Features:**

- **Central management of all PCs**, servers and software assets in the corporate network
- **Automated software distribution**: content, applications and operating systems
- **Operating system migration**, based on any scenarios and procedures
- **Additional access and support options** for user support purposes
- **Complete disaster recovery** of personal work environments at the push of a button
- **Enterprise-wide inventory** of hardware and software

*"When Nexus promised that they could install 70 PCs virtually simultaneously we were delighted - but sceptical. Thanks however to their PC Lifecycle Management system we were able to witness them "building" our PCs on site, 20 at a time and rolling them straight out to desk tops. Highly impressive."*

(May 25<sup>th</sup>, 2005; from a UK customer)

## **PC Lifecycle Management – Modules at a Glance**

### **PCLM Manager**

This is the central administration console that handles configurations of each PC and users in an organization. Data on PCs and users from other sources are imported in the PCLM Manager console.

### **PCLM Installer**

This module permits automatic Installation of the most common (Microsoft) Client-OS. The PCLM Installer is not based on Cloning/Imaging technology and therefore provides maximum flexibility for OS configuration. Imaging solutions like Symantec Ghost can be fully integrated if you desire.

### **PCLM Configurator**

The PCLM Configurator allows the packing all types of software into distribution packages, for roll out and for fully automatic installs to clients, notebooks and servers.

### **PCLM Personal Backup**

This module enables the IT administration to save and restore any personal data, adjustments or configurations of a PC virtually with a mouse click. This includes documents, applications, emails, tables, but also bookmarks, screensaver, password files and other characteristics of a personal working environment. PCLM Personal Backup adds the final touch when it comes to complete and comprehensive configuration management. PCLM Personal Backup completes the set of modules by implementing the necessary functions in the areas of backup and restoring of all personal configuration components in all PCs.

## **The PCLM Four Step Migration Process. . . .**

### **1. Discovery**

The first step is analyzing you environment. This analysis includes client hardware components, user settings, account information, domain trusts, user access rights and exchange settings.

### **2. Building your virtual domain structure**

This step designs your future active directory. This structure will be implemented based on your current network infrastructure. The new active directory can be tested and optimized separately. This ensures the continuity of your existing network services like DNS, DDNS and DHCP. The newly created active directory structure can be implemented in other existing NT domains.

### **3. Migration to Windows\* 2000 or XP**

After completing your active directory, all components of the current Windows NT 4.0 network will be imported into the active directory. This enables you to migrate any individual NT 4.0 domains within your organization into the active directory. After naming the individual domains you may modify or rebuild at a later date.

### **4. Automated rollout of Windows 2000 or XP**

Rollout of the operating system with PCLM is a fully automated, hardware independent process, initiated from one central console.

The PCLM based migration is summarized below:

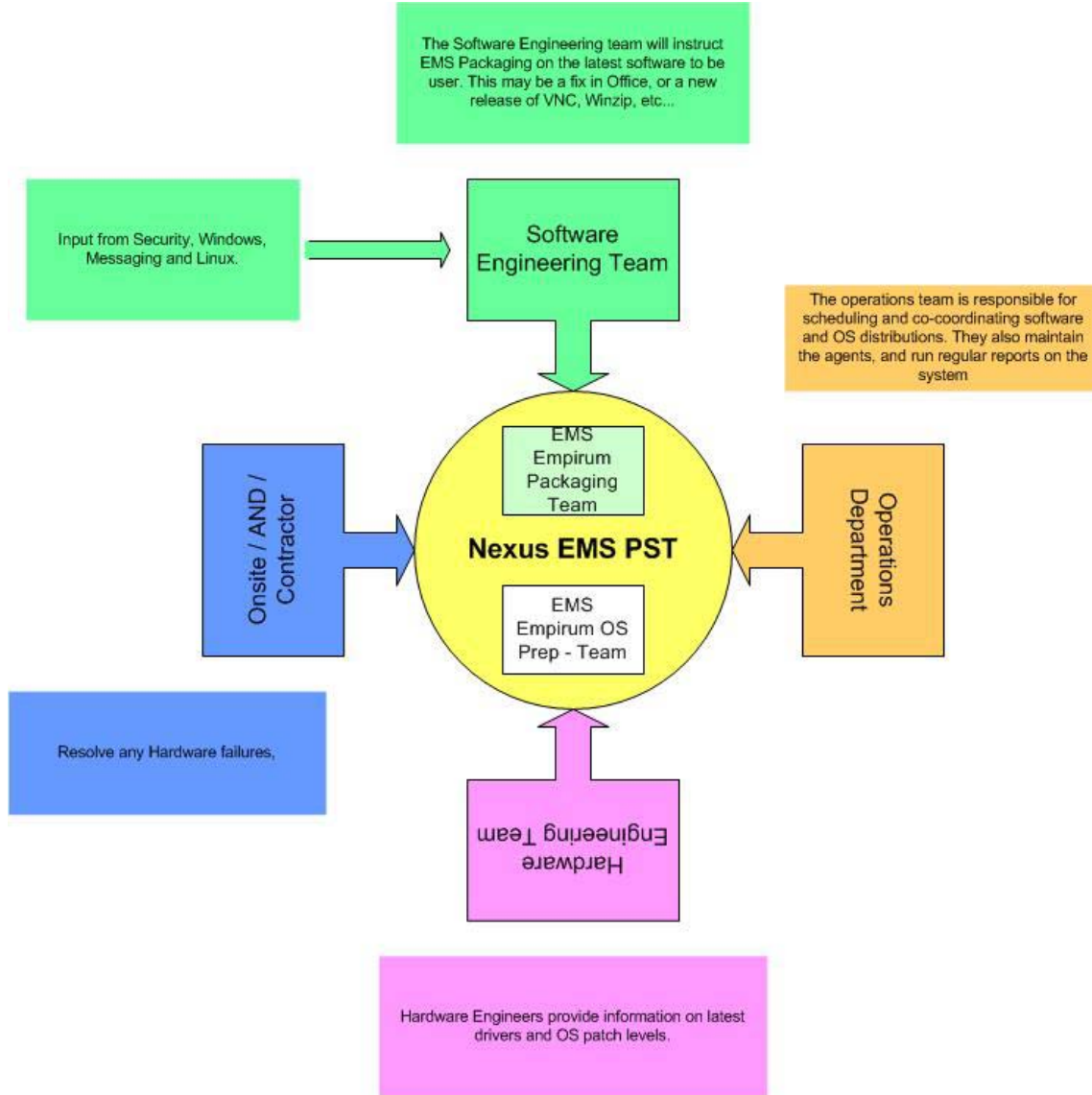
**Secure the user environment:** All user dependent settings and configurations are stored in a central location. These settings include: browser settings, bookmarks, dictionaries, outlook contacts, personal data, password settings etc.

**Define corporate standards:** Define user groups and assign applications to these roles as well as standard user profiles definitions which conform to corporate standards.

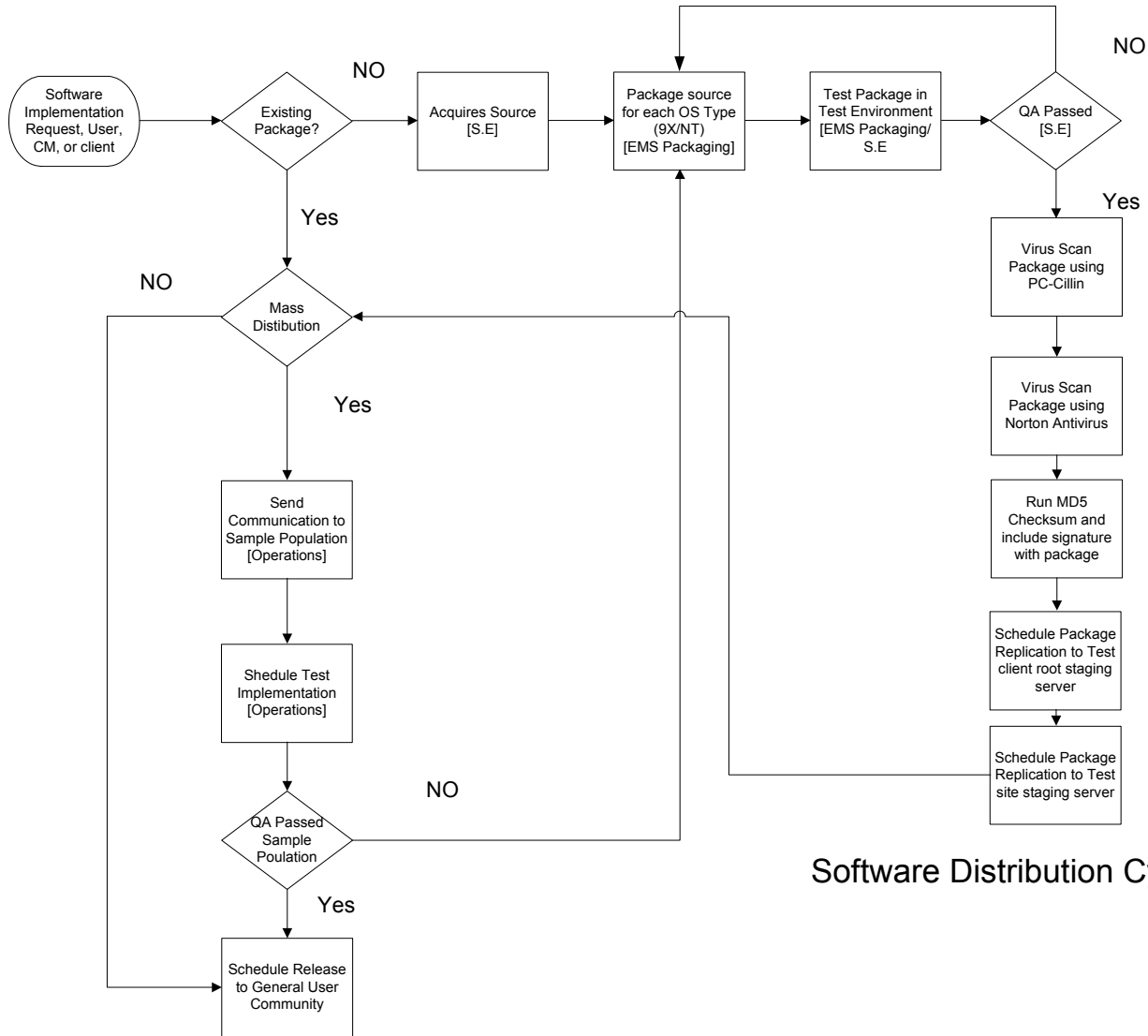
**Desktop migration:** Fully automated rollout of the new operating system and installation of all selected applications.

**Restore the original user environment:** Fully automated restoration of all user settings.

**PCLM is part of the Nexus Enterprise Management Systems (EMS):**



## Nexus EMS Model - Interaction with Other Nexus Departments



Software Distribution Cycle

# EMS Hardware Build Flowchart

2/12/2003

